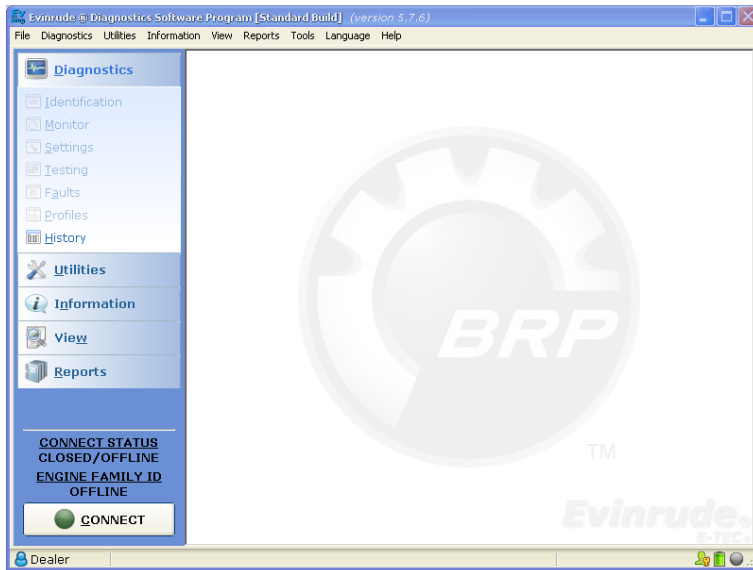


## Software UPDATE of EMM

After update your E-TEC/DI outboard you need to install update for your motor in Evinrude update map pack (some date here), you have it for Inline (for all inline E-TEC) and 90V (for V E-TEC) and DI for Direct injections engine.

This will install all update files in Evinrude diagnostic program, and you can update your outboard from Evinrude diagnostic program by selecting "Software update".



Simply follow instruction on the screen and find right update for your engine. It will be marked with green check, so you can always check if it is right, on number label on EMM.

Please don't forget, when you connect/disconnect bootstrap, you should shutdown EMM (key off)!!!

How installing bootstrap cable, you can see on my E TEC 75/90PS



After you remove four screws, it looks like this. Install bootstrap cable, on outboard on EMM which is on OFF- disconnected from power, on this bigger 6pin connector, which should look like this-after disconnect:



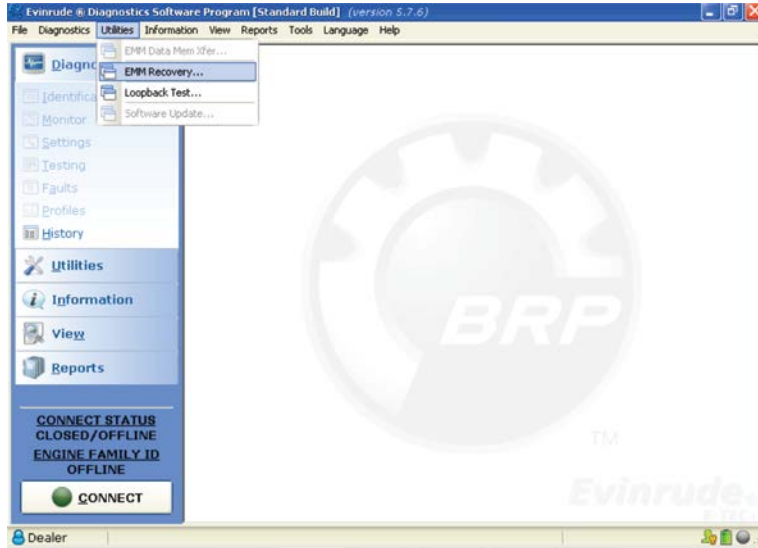
And after connect bootstrap:



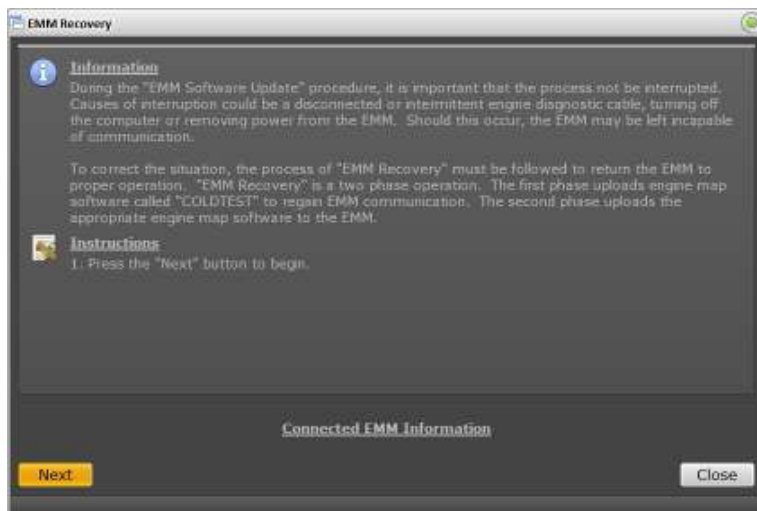
After this, just follow on screen instruction for other steps.

On some older outboards before model year 2007, you will first need to do EMM recovery, because you need all new EMM software, to be able to update easy from Evinrude diagnostic program like I mention below.

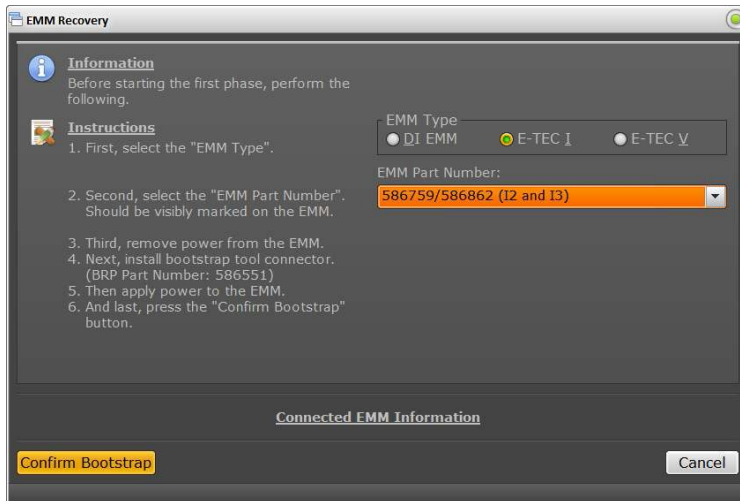
First you must disconnect you software and then select EMM recovery:



Screen read carefully and goes next:



Secondly you will see this screen:



You have all steps left, just follow and select your EMM (you have this number on sticker on EMM).

After this is easy, just follow instruction on screen.